

Lord, for what
do I wait?
My hope is in
YOU.

Psalm 39:8



Donate at ArchLou.org/CSA.



Dear Brothers and Sisters in Christ,

Welcome to the 2021 Catholic Services Appeal!

The theme of this year's Appeal is from sacred scripture, Psalm 39:8 – ***Lord, for What Do I Wait? My Hope Is in You.*** These words invite us to hope in the Lord as we faithfully respond to God's call.

You will notice that the Catholic Services Appeal materials are very different this year. I hope you will find this new format to be more informative, with greater detail on the many ways your offering to the Catholic Services Appeal is **bringing Christ to others, in every corner of the Archdiocese of Louisville.**

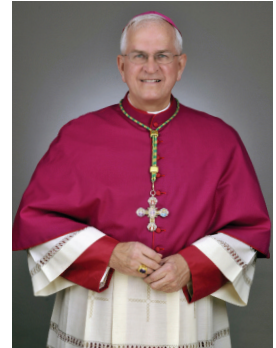
I humbly ask that you support the 2021 Catholic Services Appeal. Your gift is a tangible way to put your faith into action, making a difference in YOUR parish and throughout the Archdiocese of Louisville.

For what do we wait? Donations may be shared securely online at www.ArchLou.org/CSA or by returning the enclosed response form in the envelope provided.

Our hope is in Him. Our hope is indeed in the Lord, and we are called to place our trust in Him. Your gift, in any amount, is a faithful expression of your hope and trust in the Lord and will be received with my deepest gratitude. May the peace of God, the Giver of all gifts, be with you always.

Sincerely Yours in our Lord,

Most Reverend Joseph E. Kurtz, D.D.
Archbishop of Louisville



An Invitation to Give

Your support of the 2021 Catholic Services Appeal strengthens parish communities and brings Christ's love to others, throughout the Archdiocese of Louisville. Over 100 programs and ministries are supported by the Catholic Services Appeal. Your gift will have a lasting impact!

Did you know that **100%** of the donations made to the Catholic Services Appeal go directly toward funding YOUR parish and Christ's people throughout the Archdiocese of Louisville?

A highlight of just a few of the good works that your gift will support:

Faith Formation	Multicultural Ministry
Worship	Youth & Young Adults
Vocations	Family Ministries
Deacon Formation	Campus Ministry
Retired Priests	<i>The Record Newspaper</i>
Seminarians	Facilities Management



Ways to Give

Your CSA gift may be made as a pledge or a one-time gift. A pledge may make it easier to share a larger gift by spreading your payments between now and June 2022.

Making a gift to the Catholic Services Appeal is easy:

- Cash or check
- Visa, MasterCard, Discover, American Express
- Automatic transfer from your bank account
- Transfer of stock
- To make a gift online, visit www.ArchLou.org/CSA or scan the QR code with your cell phone.



NEW THIS YEAR! Recurring Gift Option

Monthly recurring gifts allow you to make your offering through convenient automatic deductions from your credit card, debit card, or checking account.

Simple. Your gift is divided into manageable increments.
Convenient. Your gift is tax deductible, and each January you will receive a summary of your annual donation.
Secure. Your payment information is secure, and you may change your donation anytime by contacting the Office of Mission Advancement.
Important. Your gift will make an impact!



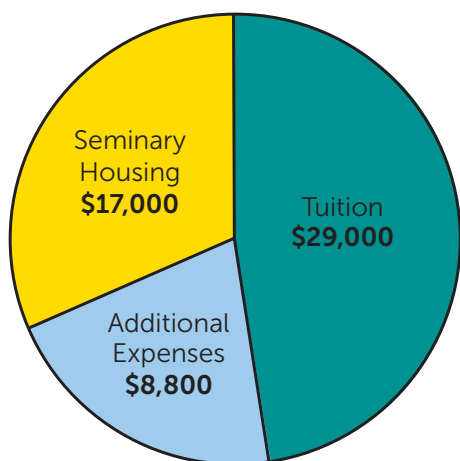


Thank You for Supporting the Seminarian Education Fund

Our seminarians rely solely on the generosity of the faithful to cover the expenses associated with seminary education.

Through your generosity to the Catholic Services Appeal, we are able to fully support these men as they prepare for a life of service to our Archdiocese through the vocation of priesthood.

Average cost per year for One Seminarian: \$54,800



How Does the Catholic Services Appeal Help MY Parish?

Seminary and seminarian costs for all diocesan priests are provided for their years of seminary formation as well as ongoing priest formation.



Funding support for retired diocesan priests.

Parish Deacons – funding provided for their years of diaconate formation.



Faith Formation – catechesis, conferences, workshops, training sessions, and parish resources.

Youth and Young Adult Ministry – retreats, college campus ministry, activities, and other events.



Family Ministry – marriage prep, resources for married couples, family counseling, safe environment training.

Worship – liturgical direction, liturgical minister formation, and parish resources.



Personnel – human resources support for parishes regarding labor laws, policies, hiring, etc.

Facilities Management – parish facility assessments, assistance with contractor bids, and architectural reviews.



Hispanic and Multicultural Ministry – training, resources, translations, etc.

Jail/Prison Ministry – coordination and parish training.



Parish Leadership Development – Parish Council training, staff development, etc.

The Record – weekly newspaper mailed to all registered parish households.



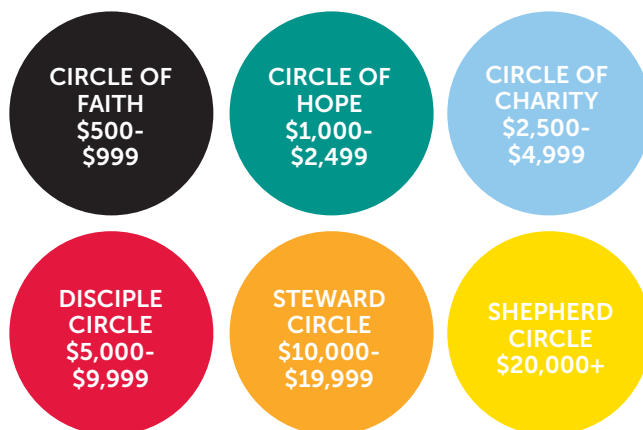


"You are the salt of the earth. You are the light of the world."

Matthew 5:13-14

Founded in 2015, the Salt and Light Giving Society honors donors who provide for the work of the Archdiocese of Louisville with an annual leadership gift to the Catholic Services Appeal. Salt and Light Society members carry on the teaching of Jesus in Matthew 5:14 to shine light throughout the world. **Every** gift to the Catholic Services Appeal is important, and the true reward for Society members is the knowledge that their leadership gifts are supporting efforts that offer hope and bring Christ to others in **every** parish throughout the Archdiocese of Louisville.

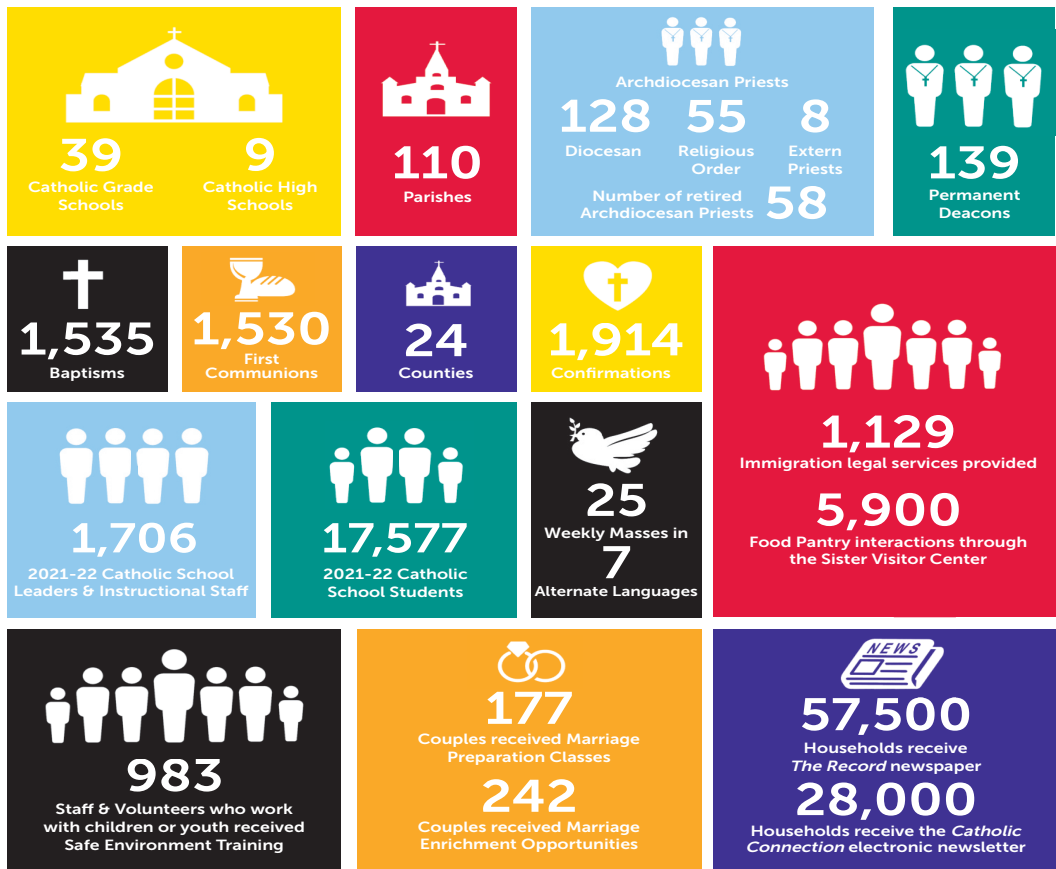
Giving Circles of the Salt and Light Giving Society:



A pledge of just \$50.00 per month for ten months is a Circle of Faith gift! Members are recognized online for their generosity at www.ArchLou.org/SaltandLight.



Our Catholic Community at A Glance



PRAYER INTENTIONS

Please share your prayer requests to be placed in Archbishop Kurtz's Chapel. Whether your needs are spiritual or temporal, Archbishop Kurtz will personally pray for you and your special intentions.

Name: _____

You may also submit your prayer requests online at www.ArchLou.org/faithful-in-prayer/.

CUT OR TEAR ON DOTTED LINE AND MAIL IN THE ENCLOSED ENVELOPE.



Archdiocese of Louisville
3940 Poplar Level Road
Louisville, KY 40213



**Together, we are
bringing Christ to
others, in every
corner of the
Archdiocese of
Louisville.**

May God bless you!