



# Honor Thy Children

*Archdiocese of Louisville continuing education for the awareness and prevention of child abuse*

## GET TO KNOW THE KENTUCKY CABINET FOR HEALTH AND FAMILY SERVICES

It is well known that Kentucky is a mandatory reporting state when it comes to child abuse. That means if you even suspect abuse you are required by law to report it. As per KRS 620.030(1) - Anyone with a reasonable suspicion that a minor is being abused or neglected is required to make a report to the Child Protective Services. To report child abuse and neglect call toll-free any of these numbers (877)

597-2331/(877) KYSAFE1, (800) 752-6200. Or, for non-emergency only, you can report online at <https://prdweb.chfs.ky.gov/ReportAbuse/>. This is monitored from 8 a.m. to 4:30 p.m. Eastern time, Monday through Friday. Reports will not be reviewed during evenings, weekends or state holidays. As always you must call 911 in case of an emergency.



### Archdiocese of Louisville

Volume VII Issue I

February 2020

### If you need support or someone to talk to:

- ☺ Prevent Child Abuse Kentucky or Indiana: 800.CHILDREN/800.422.4453 [www.pcaky.org](http://www.pcaky.org) [www.pcain.org](http://www.pcain.org)
- ☺ Childhelp National Child Abuse Hotline 800.4.A.CHILD 800.422.4453 [www.childhelp.org](http://www.childhelp.org)

## SOME FREQUENTLY ASKED QUESTIONS WHEN REPORTING ABUSE

### Q. What protections are there for people who report?

A. Anyone acting upon reasonable cause in the making of a report or acting under KRS 620.030 to 620.050 in good faith shall have immunity from any liability, civil or criminal, that might otherwise be incurred or imposed. Any such participant shall have the same immunity with respect to participation in any judicial proceeding resulting from such report or action. However, any person who knowingly makes a false report and does so with malice shall be guilty of a Class A misdemeanor.

### Q. What happens to children who are being abused if it is reported?

A. Reports are investigated by DCBS. Based on information obtained during the investigation, services may be offered to maintain the family. Children are only removed if the home is unsafe.

### Q. Can a social worker just take a child out of a home?

No. Only the police have that authority if they feel that a child is in imminent danger. A judge can issue an emergency custody order (ECO) for a child to be picked up and held for 72 hours before a hearing. KRS 620.040(3)(b) allows a hospital administrator or a physician treating a child to hold that child without a court order but they must request an ECO within 72 hours

### Are You Safe Environment Compliant?

Are you working regularly with children?

If so you must have attended an Archdiocese of Louisville Safe Environment Training.

You must also have a satisfactory background check not older than 5 years.

See your Safe Environment Coordinator today to verify your compliance!

# WHY WE NEED TO ENGAGE

Findings in the 2019 annual Child Fatality and Near Fatality External Review Panel report show that child deaths from abuse or neglect in Kentucky have risen steadily over the last seven years. The majority of victims in newer cases were under the age of four and mostly white males. The panel also found a vast majority of were "potentially Preventable" citing a "prevailing" lack of quality caseworker visits with families. "Previous annual reports have addressed workload issues and advocated for additional resources," the panel wrote. "Regretfully, there appears to have been little improvement over the years." The panel, created in 2012 is comprised of 20 lawmakers, mental health, law enforcement, medical and social service professionals. It admits the state's "array of services is not adequate or accessible to children and families in all areas of the state." Highlighting failings by bystanders, law enforcement and medical providers to detect and report maltreatment. In twenty percent of the cases where law enforcement was called, those officials did not talk with a child protective service worker. Similarly, the report found in more than half of incidents were medical attention was required, providers did not contact CPS. A Lexington Herald Leader article dated December 11, 2019 is quoted as saying "In one case, a 2-year-old who was later found to have been abused was taken to an

emergency room by his mother with symptoms of vomiting, "shakes" and a reported history of his ears turning purple. He was diagnosed with an ear infection, given antibiotics and discharged." This is why it is so important to understand the signs of abuse and know what to do if you suspect abuse.



It does not matter if you are a parent, teacher, coach or staff member, it is our obligation to protect our children. If you haven't been to an Honor Thy Children Safe Environment Workshop, make plans to attend soon. If you are a volunteer (or plan to volunteer) working regularly with children or are a paid staff member working with a parish or school, it is mandatory that you complete this training and have a current background check not older than five years. Reach out to your school Safe Environment Coordinator today to check your status. If you don't know who that is, contact Scott Fitzgerald, Archdiocese of Louisville Coordinator of Safe Environment Services ([fitzgerald@archlou.org](mailto:fitzgerald@archlou.org)) (502.471.2132) to find out who that is.

## QUOTES FROM AN ABUSER

"I was a master of manipulating both the children I abused and their families. They trusted me whole heartedly with their child."

*Extracted from the Honor Thy Children Training*

## UPCOMING TRAININGS

A current list of trainings is always available at [www.archlou.org/safe](http://www.archlou.org/safe)  
All trainings are at 6:30p unless otherwise indicated.

3.5.20  
St. Athanasius

3.16.20  
St. Michael

3.23.20  
Incarnation

4.14.20  
St. Martha

4.16.20  
St. Albert

5.4.20  
St. Gabriel

6.22.20  
Epiphany

8.10.20  
St. Gregory (Cox's Creek)

More trainings will be scheduled for May, June & July and posted at [www.archlou.org/safe](http://www.archlou.org/safe) as they are confirmed.

Keep checking this webpage for updates as trainings cancelled due to inclement weather will be posted here

Please note that due to the nature of material discussed at these trainings, children under 16 will not be allowed into the trainings and child care is not provided.

Also a friendly reminder that seating can fill up fast at some venues so it's recommended that you



## **CHILD ABUSE: IT ADDS UP (IN MORE WAYS THAN ONE)**



### **ECONOMIC**

The health and social impacts of child sexual abuse on a survivor last a lifetime and affect us all socially and financially. The average lifetime cost per victim of child abuse is \$210,012, costing the U.S. billions annually. These expenses are largely paid for by the public sector - the taxpayer.

### **SOCIAL**



Delinquency and crime, often stemming from substance abuse, are more prevalent in adolescents with a history of child sexual abuse. Adults survivors are also more likely to become involved in crime, both as a perpetrator and as a victim. Children tend to have academic problems while the risk for teen pregnancy increases. Sexual behavior and over-sexualized behavior problems general tend to increase.

### **HEALTH**



There are many health-related costs to survivors of sexual abuse. Generally, adult victims have higher rates of healthcare utilization and report significantly more health complaints when compared to adults without a history of child sexual abuse. Some health related issues include emotional and mental health problems (often the first consequence and sign of child sexual abuse), substance abuse that lasts into adulthood and obesity and eating disorders followed by diabetes and heart disease.

## **MONTHLY SAFE ENVIRONMENT TIP**

We had a great turn out for a recent training at St. Paul in last month!

There were several people from one school in attendance and it was discovered afterward the school is making all new parents attend the Safe Environment Training. Thus ensuring everyone is safe environment compliant should the need arise.

As we round the corner and look to close out the 2019-2020 school year, will you be ready to volunteer or serve your parish/school should you be called upon?

As the school year winds down getting compliant isn't always a priority but now is the best time to ensure you're up to date to avoid the fall rush.

Many times the office of Safe Environment will get frantic calls at the 11th hour trying to verify compliance only to find out they thought they took the training but didn't or thought a training from another diocese would qualify.

If you think you may be working regularly with children in the future now is the time to check your compliance with your parish/school Safe Environment Coordinator.

If you don't know who that is or you have other questions or concerns feel free to reach out to:

**Scott Fitzgerald**  
Archdiocese of Louisville  
Coordinator of Safe  
Environment Services  
502.471.2132 or via email  
sfitzgerald@archlou.org

## **BREAKING THE CYCLE**

Raising children is one of life's greatest challenges and can trigger anger and frustration in the most even-tempered parent or guardian. If you grew up in a household where screaming and shouting or violence was the norm, you may not know any other way to raise your kids. Recognizing that you have a problem is the biggest step to getting help. If you have a history of child abuse, having your own children can trigger strong memories and feelings that you may have repressed. You may be shocked and overwhelmed by your anger and

feel like you can't control it. But you can learn new ways to manage your emotions and break your old patterns. Remember, you are the most important person in your child's world - and you don't have to go it alone. If you need help feel free to reach out to Martine Siegel via phone (502.636.1044) or email (msiegel@archlou.org) and she will be happy to refer you to a local resource who help navigate the sometime troubled waters.



**Archdiocese of Louisville  
Office of Safe Environment**

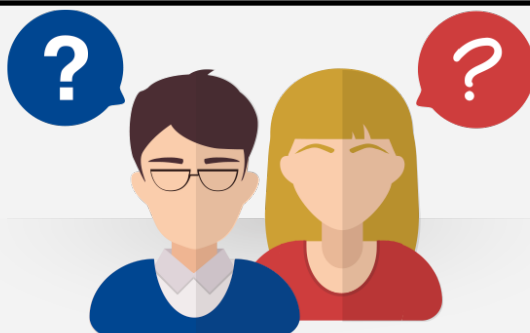
Martine Bacci Siegel, MSN, RN, CNS  
Maloney Center  
1200 South Shelby Street  
Louisville, KY 40220

Phone: 502.636.1044  
Fax: 502.634.3381  
E-mail: [msiegel@archlou.org](mailto:msiegel@archlou.org)

No child or adult should ever experience abuse by anyone, especially a church minister. We all have the right to be treated with dignity and to expect our church to reflect the goodness of God in all of its dealings.

We hope that this information is helpful to all in our communities who are working to prevent and respond to childhood sexual abuse. Please let us know if you need further assistance or information by calling or emailing our victim assistance coordinator, Ms. Martine Siegel, at 502/636-1044; [victimassistance@archlou.org](mailto:victimassistance@archlou.org) or the Pastoral Center at 502/585-3291.

We must heed God's call to care for the most vulnerable among us and to continue our efforts toward wholeness and health in dealing with sexual abuse.



### **"So what IS child sexual abuse?"**

*Simply stated, child sexual abuse is defined as any adult interaction with a child for the purpose of meeting the sexual needs of an adult. Sexual abuse can be physical, verbal, auditory, or visual and therefore does not necessarily require physical contact between the abuser and the child. For example, watching a child undress, take a shower, or go to the bathroom for the purpose of creating sexual arousal would be child sexual abuse. Other non-physical behaviors include an adult exposing his or her sexual organs to a child and speaking to a child about things of a sexual nature that are inappropriate for the child's age. Viewing, possessing, or distributing child pornography is criminal and is a form of sexual abuse that is becoming an increasing problem in our society.*